

Scalable Deep Gaussian Markov Random Fields for General Graphs

ICML 2022

Joel Oskarsson¹

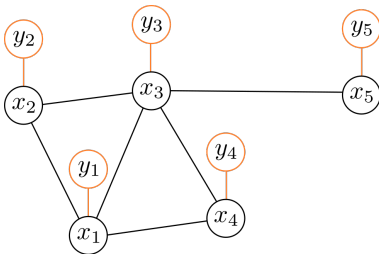
Per Sidén^{1 2}

Fredrik Lindsten¹

¹ Division of Statistics and Machine Learning
Department of Computer and Information Science
Linköping University, Sweden

² Arriver Software AB

A Layered Gaussian Model on Graphs



- Latent nodes \mathbf{x}
 - Gaussian prior $\mathbf{x} \sim \mathcal{N}(\boldsymbol{\mu}, \mathbf{Q}^{-1})$
 - Gaussian Markov Random Field (GMRF)
- Noisy observations
 - $\mathbf{y} = \mathbf{x} + \boldsymbol{\epsilon}$, $\boldsymbol{\epsilon} \sim \mathcal{N}(\mathbf{0}, \sigma^2 \mathbf{I})$
- Predictions for unobserved nodes
- Conjugate setting

Deep GMRFs (DGMRFs)¹

- Define GMRF using affine map g

$$\mathbf{z} = g(\mathbf{x}) = G\mathbf{x} + \mathbf{b}, \quad \mathbf{z} \sim \mathcal{N}(\mathbf{0}, I) \quad (1)$$

¹Per Sidén and Fredrik Lindsten. “Deep Gaussian Markov Random Fields”. In: *Proceedings of the 37th International Conference on Machine Learning*. 2020

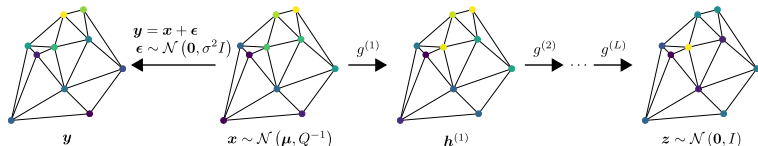
Deep GMRFs (DGMRFs)¹

- Define GMRF using affine map g

$$z = g(\mathbf{x}) = G\mathbf{x} + \mathbf{b}, \quad z \sim \mathcal{N}(\mathbf{0}, I) \quad (1)$$

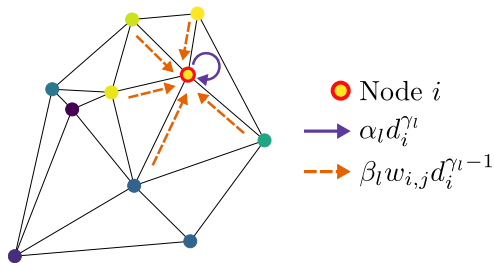
- Layer structure

$$g = g^{(L)} \circ g^{(L-1)} \circ \dots \circ g^{(1)} \quad (2)$$



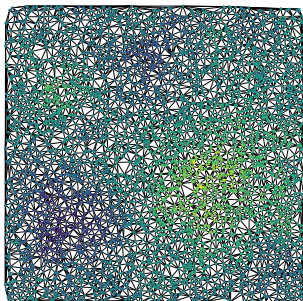
¹Per Sidén and Fredrik Lindsten. “Deep Gaussian Markov Random Fields”. In: *Proceedings of the 37th International Conference on Machine Learning*. 2020

A Deep GMRF Layer for Graphs



$$h_i^{(l)} = b_l + \alpha_l d_i^{\gamma_l} h_i^{(l-1)} + \beta_l d_i^{\gamma_l - 1} \sum_{j \in n(i)} w_{i,j} h_j^{(l-1)} \quad (3)$$

Training and Inference



- Efficient training of layer parameters
 - Maximize ELBO
 - Scalable methods for $\log |\det(G)|$
 - Re-use layers to define variational distribution
- Exact posterior inference for latent field \mathbf{x}

Experiments

- Experiments on Synthetic, Wikipedia, and Spatial graphs
- Principled uncertainty estimates

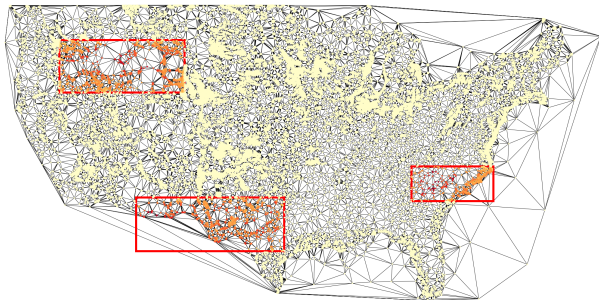


Figure: Posterior marginal std.-dev.

Links and Contact Information

Code available: github.com/joeloskarsson/graph-dgmrfs



Joel Oskarsson

✉ joel.oskarsson@liu.se¹
🌐 joeloskarsson.github.io
🐦 [@joel_oskarsson](https://twitter.com/joel_oskarsson)



Per Sidén

✉ per.siden@liu.se



Fredrik Lindsten

✉ fredrik.lindsten@liu.se
🌐 lindsten.netlify.app

¹Correspondence to